

Annual Meeting Preview Jacksonville, Florida, October 18-20, 2007 Lynn Jacobson, Jacksonville Public Library



The riverfront in downtown Jacksonville (photo by Lynn Jacobson)

Once known as Cowford (the narrow spot in the river convenient for a cow crossing), Jacksonville, Florida, is now a bustling city located in the northeast corner of the state. The city is centered on the banks of the north-flowing St. Johns River and is bordered on the east by the Atlantic Ocean. The city is known for being the largest city in land area in the contiguous United States (only Sitka, Juneau and Anchorage, Alaska are larger), the home of Super Bowl XXXIX, and now SEMLA XXXVII!

We will be staying at the Hampton Inn in San Marco, just across the St Johns River from downtown Jacksonville. The rate is \$104 per night plus 13% sales tax, for a single or double room, and includes a complimentary breakfast each morning. To make your room reservations please contact the hotel at **(904) 396-7770** and use our group name, **SEMLA**. The cutoff date for reservations is **September 20th**.

The conference kicks off Thursday evening with registration and a reception hosted once again by SEMLA's long time supporter and friend Dana Jaunzemis of Music Library Service Company (MLSC). Following the reception, put on your walking shoes for dinner at the Jacksonville Landing (take the water taxi!), walk over

to BB's, a bistro, or a little further (or short drive) is San Marco Square where you'll find several restaurants to chose from.

Friday and Saturday morning we'll take Jacksonville's light rail system, the Skyway Express, to Heming Plaza. We will meet just across the plaza at the Jacksonville Public Library's (www.jaxpubliclibrary.org) brand new Main Library in the state-of-the-art conference center. Registration will continue Friday morning at 8:30 with our meeting commencing at 9:00.

—continues p. 4

Contents

From the Chair	3
Member News.....	3
Meeting Preview, continued	4
Conference Registration Form.....	5
SEMLA Travel Grant	6
Officer Election Ballot.....	7
Candidate Biographies	8
Minutes, Interim Meeting, March 2007	9
Membership Application.....	11

SEMLA

Southeast Chapter of the Music Library Association

Executive Board

LYNNE C. JAFFE, *Chair*
At Your Service: Library Contract Cataloging

ANNA NEAL, *Vice-Chair/Chair-Elect*
University of Memphis

SCOTT PHINNEY, *Secretary/Treasurer*
University of South Carolina

GUY LEACH, *Member-at-Large, 2006-2007*
Georgia State University

LYNN JACOBSON, *Member-at-Large, 2006-2008*
Jacksonville Public Library

Archivist

LEE RICHARDSON
University of North Florida

Web Site Editor

NARA NEWCOMER
East Carolina University

Newsletter Editor

JOHN LESLIE
University of Mississippi



The Southeast Chapter of the Music Library Association, Inc. (SEMLA), is a non-stock, non-profit organization dedicated to promoting the establishment, use, and growth of music libraries and collections of music materials in the Southeast. It encourages communication and cooperation with libraries and music collections not affiliated with the Music Library Association to determine how the Chapter may be of assistance to the individual library. SEMLA provides a forum for the exchange of ideas regarding all aspects of work with music materials as well as initiating and encouraging activities to improve the organization, administration, holdings, and public services of such libraries and collections. The region covered by the Chapter includes the states of Alabama, Arkansas, Florida, Georgia, Louisiana, Mississippi, North and South Carolina, Tennessee and Puerto Rico.

Membership Information

Membership in SEMLA is available at three levels: Personal (\$10.00 U.S.), Institutional (\$15.00 U.S.), and Student (\$5.00 U.S.). An application for membership appears on the back page of this newsletter. Make checks payable to SEMLA. Send membership applications, renewals, dues, and corrections and updates to:

Scott Phinney
SEMLA Secretary/Treasurer
University of South Carolina
School of Music
813 Assembly St.
Columbia, SC 29208

SEMLA Web Site

Nara Newcomer, Web Editor
<http://personal.ecu.edu/newcomern/semla/index.html>
newcomern@ecu.edu

Breve Notes (Newsletter)

John Leslie, Editor

Breve Notes is published electronically on the chapter website three times a year: January, April, and August. Send submissions to:

John Leslie
J.D. Williams Library
P.O. Box 1848
University, MS 38677-1848
jleslie@olemiss.edu

SEMLA-L

To subscribe, send a message to LISTSERV@LISTSERV.UGA.EDU and type only the following in the body of the message:

SUBSCRIBE SEMLA-L <your name>

You will receive a confirmation from the list.

FROM THE CHAIR

Lynne C. Jaffe

At Your Service: Library Contract Cataloging

I hope you all had a nice summer. It's been a busy one here and I am once again looking forward to the fall meeting.

Our fall meeting will be at the Jacksonville Public Library in Jacksonville, FL, hosted by **Lynn Jacobson** (Jacksonville Public Library) doing double duty as both Local Arrangements Chair and Program Committee Chair. The meeting dates are Oct. 18-20, 2007. See her article for details of this meeting by her committees. Please encourage any staff persons or library school students who would like to join us to apply for the SEMLA Travel Grant. The committee is chaired by Vice-Chair/Chair-Elect **Anna Neal** (University of Memphis).

This is my final column as Chair of SEMLA. It has been an honor and pleasure to serve SEMLA in this capacity. I will pass the hammer to **Anna Neal** at the October meeting. I have no doubt that she will do a terrific job as Chair.

During the summer, we said good-bye to Secretary/Treasurer Kirstin Dougan who accepted a position as music user services coordinator at University of Illinois, Urbana-Champaign. **Scott Phinney** (University of South Carolina) has agreed to fill out the remainder of Kirstin's term.

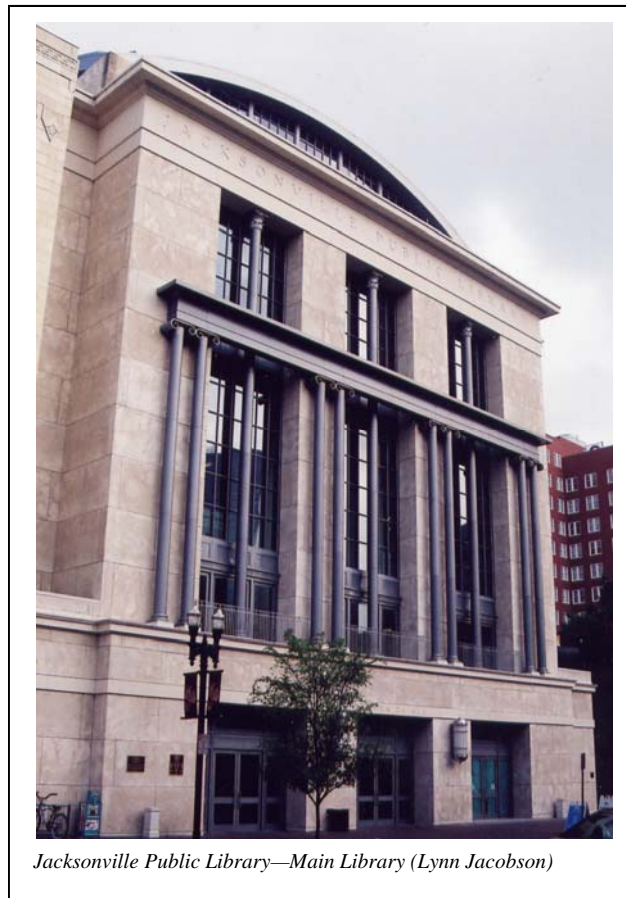
It is my pleasure to announce that SEMLA is a recipient of an MLA Chapter Grant. We received funds to subsidize the travel expenses of the six member volunteers (**Grover Baker** (Center for Popular Music, Middle Tenn. State Univ.), **Jean Wald** (Stetson Univ.), **Joyce Clinkscales** (Emory Univ.), **Liza Weisbrod** (Auburn Univ.), **David Guion** (Univ. of North Carolina Greensboro) and **Scott Phinney** (Univ. of South Carolina)) to the MLA Educational Outreach Program preconference workshop at the next MLA meeting.

In this issue are ballots for the positions of Secretary/Treasurer and Member-at-Large. Many thanks to Nominating Committee Chair **Guy Leach** (Georgia State University) and his committee (**Sarah Dorsey** (University of North Carolina Greensboro) and **Mac Nelson** (University of North Carolina Greensboro)) for presenting us with yet another strong slate. Please remember to vote (either electronically or via paper).

I want to thank **John Leslie** (University of Mississippi) for putting together another excellent issue of **Breve Notes**. Thanks also to **Nara Newcomer** (East Carolina University), Web Editor, for keeping the SEMLA Web site looking great.

If you have not paid your 2007-2008 dues, please pay them now. The form is available on the SEMLA Web site, <http://personal.ecu.edu/newcomern/semla/index.html>. Remember only the votes of members in good standing will count in the upcoming election.

I look forward to seeing you in Jacksonville.



Jacksonville Public Library—Main Library (Lynn Jacobson)

Member News

Kirstin Dougan has accepted a position as Music User Services Coordinator at the University of Illinois-Urbana Champaign Music Library.

Harry Eskew was involved in hosting a Sacred Harp Heritage Tour of England and Wales, June 4-17. The tour focused on visiting places where the hymn texts of the Sacred Harp originated, such as the village of Olney, where Newton wrote "Amazing Grace." We sang several of Newton's hymns in the Anglican parish church he served. We attended Evensongs and even sang Sacred Harp for 20 minutes in York Minster Cathedral. We had 33 singers from Massachusetts to California plus one from Canada. A tour highlight was a British-American Sacred Harp Singing at Derby with 100 enthusiastic singers present.

4 • Breve Notes

Annual Meeting Preview—continued from p.1

Explore downtown Jacksonville on your own for lunch with several options close by. Shelby's Café is in the library, Café Nola in MOCA Jacksonville is next door, Zodiac Grill is one way and Burrito Gallery is the other, yum!

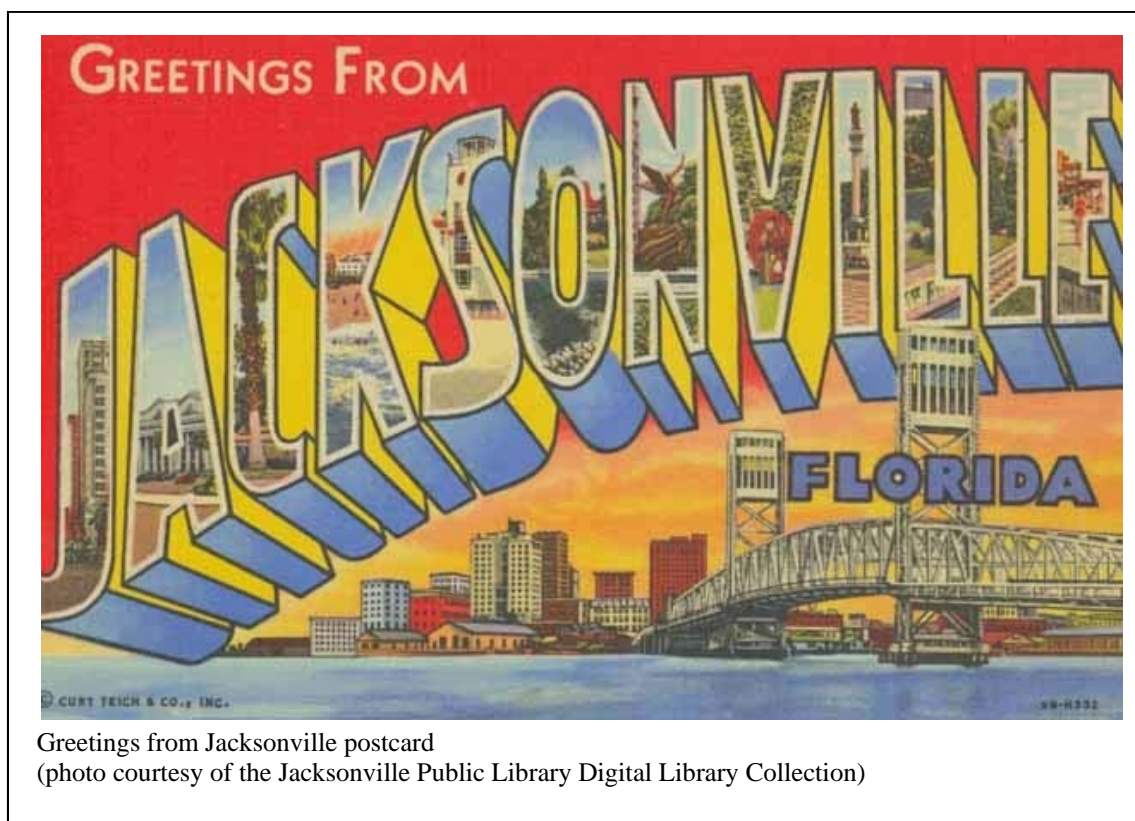
Our banquet Friday night will be at the River City Brewing Company (www.rivercitybrew.com). The restaurant is a short walk along the river from the hotel or 1 stop on the Skyway. The cost of the banquet is \$38, which includes your choice of a chicken, seafood or vegetarian entrée, salad, roll, dessert and non-alcoholic beverages. Our room overlooks the St. Johns River so be prepared to be dazzled by the spectacular Jacksonville skyline at night.

For those interested, the Jacksonville Symphony Orchestra will be performing Thursday, Friday and Saturday night. The program, "Beloved Brahms," includes Weber's Overture to *Der Frieschutz*, Mendelssohn's *Piano Concerto No.1* (Barbara Moser, piano), and Brahms' *Symphony No. 3*. More information about the concert and ticket prices can be found on the Jacksonville Symphony Orchestra's Web site: www.jaxsymphony.org.

The program committee, Diane Steinhaus, Gary Boye and Lynn Jacobson (chair) are putting together a wonderful combination of SEMLA scholarship and local Jacksonville flair. Look forward to hearing about Jacksonville natives James Weldon Johnson and John Rosamond Johnson, saxophonist and native Floridian Gigi Gryce, an update on the virtual life of Mrs. Joe Person and much, much more!

For those staying Saturday night who are interested in driving down to St. Augustine for sightseeing and dinner, the Local Arrangements Committee will organize transportation. Please fill out this part of the registration form and let us know if you will have a car and are willing to drive.

Complete conference details, including the program, hotel and registration information will be available shortly on the SEMLA Web site. An announcement will be posted on SEMLA-L when the conference information is available.



Registration Form
2007 Southeast Music Library Association Conference
October 18-20, 2007
Jacksonville Public Library, Jacksonville Florida

Name _____
 Title _____ Institution _____
 Address _____
 City/State/Zip _____
 Phone (w) _____ (h) _____
 E-mail _____ Fax _____

I plan to attend the following:

Thurs. reception _____ Fri. conference _____ Sat. conference _____

Fri. banquet. Select entrée : chicken _____ seafood _____ vegetarian _____

Sat. Afternoon Trip to St. Augustine _____

I have a car and am willing to drive: _____

No. of passengers: _____

I plan to stay at the conference hotel _____ Other _____

Fees:	No.	Cost	Total
Early registration (postmarked by Sept 18)	_____ @	\$30.00	_____
Student early registration (postmarked by Sept. 18)	_____ @	\$15.00	_____
Regular registration (postmarked after Sept. 18)	_____ @	\$40.00	_____
Student registration (postmarked after Sept. 18)	_____ @	\$20.00	_____
Single-day registration	_____ @	\$20.00	_____
Banquet	_____ @	\$38.00	_____
SEMLA membership (regular)	_____ @	\$10.00	_____
SEMLA membership (student)	_____ @	\$5.00	_____
	Total Fees:		_____

Note: Late and walk-in registrations are welcome, but it is helpful if you let us know in advance that you are coming to the meeting.

Please make checks payable to SEMLA

Mail checks and registration form to:

Lynn Jacobson
SEMLA Registration
Jacksonville Public Library
3435 University Blvd. N.
Jacksonville, FL 32277

SEMLA Travel Grant

Applications are now being accepted for SEMLA's travel grant. This grant supports portions of travel, meeting registration, hotel, and subsistence expenses for a chapter member to attend this year's annual chapter meeting in **Jacksonville, FL, October 18-20, 2007**. Supporting our colleagues' involvement in the life of the chapter is a priority! **Please note that music library paraprofessionals/support professionals and library school students are eligible** for this opportunity and are encouraged to apply. The grant may be up to \$500 for one individual or may be divided among up to three individuals at the discretion of the grant committee.

I. Applicants must reside in one of the states or territories comprising SEMLA (Alabama, Arkansas, Florida, Georgia, Louisiana, Mississippi, North and South Carolina, Tennessee and Puerto Rico), and also be in at least one of the following eligible categories:

- a) A graduate library school student (by the time of the conference in October 2007) aspiring to become a music librarian;
- b) A recent graduate (within one year of degree) of a graduate program in librarianship who is seeking a professional position as a music librarian;
- c) A music librarian (holding a Master of Library Science degree or qualifications granting an equivalent status at her/his employing institution, e.g. a certified archivist with other graduate degree working extensively with music materials) in the first two years of her/his professional career, or;
- d) A library paraprofessional/support professional working with music materials as a significant portion of his/her job responsibilities.

Applicants in categories a-c must not have attended more than one prior SEMLA meeting before applying for the grant. This restriction does not apply to paraprofessionals/support professionals.

II. Applicants must submit the following to arrive by **September 1, 2007**:

1. A letter of application which includes an explanation of the reasons for attending the SEMLA annual meeting, a justification of financial need, and a budget (the single or double room rate in Jacksonville, FL is \$104 plus 13% tax per night). For those applicants currently working in libraries or archives, justification of financial need must include evidence that one has sought financial support from one's employing institution to attend the meeting and that such request was either denied or insufficiently met;
2. A current résumé or vita;
3. Two letters of support. Where applicable, one of the letters should be from a current supervisor.

Award recipients who are not already members of SEMLA are expected to join prior to attending the October meeting. A membership form is available on the SEMLA web site: <http://personal.ecu.edu/newcomern/semla/memberinfo.html>. Annual student membership in SEMLA is currently only \$5.00; a regular membership is \$10.00. Hotel accommodations will be funded at the double-occupancy rate, i.e., one-half of the \$104.00 plus tax mentioned in II/1, preceding.

III. Mail application and supporting materials to arrive via U.S. post or electronically as Word attachments by **September 1, 2007** to:

Anna Neal
Chair, SEMLA Travel Committee
115 Music Building
University of Memphis
Memphis, TN 38152

-or- abneal@memphis.edu

If you have questions, please contact Anna by e-mail (abneal@memphis.edu) or phone (901) 678-4412.

Recipients will be notified no later than September 10, 2007, and announced on SEMLA-L immediately thereafter. Please note that SEMLA may elect to pay directly for travel and hotel expenses on the recipient's behalf and only supply the balance (if any) of an award following the Jacksonville meeting. If mileage for a personal vehicle is awarded, it will be paid at the current IRS rate of \$0.485 per mile, also after the meeting.

Southeast Music Library Association
2007 Officer Election Ballot

Candidate biographies appear on page 7.

Vote for only one candidate for each office.

Secretary/Treasurer:

_____ Sara Beutter

_____ Scott Phinney

Write-in candidate: _____

Member-at-Large:

_____ Grover Baker

_____ Alicia Hansen

Write-in candidate: _____

Members have TWO voting options:

- 1) Email your vote to Guy Leach, Nominating Committee Chair, by October 11, 2007:
gleach@gsu.edu

IMPORTANT!

To be counted, your email must include
your full name and the names of the candidates for whom you are voting.

- 2) or print out and return this paper ballot to Guy at the following address by October 11, 2007:

Guy Leach
Art & Music Librarian
Georgia State University
100 Decatur St. SE
Atlanta, GA 30303

IMPORTANT!

Print or sign your name on the outside of the mailing envelope
so that your membership status can be verified!

Candidate Biographies

Secretary/Treasurer

Sara Beutter is the Music Librarian for Public Services at Vanderbilt University's Anne Potter Wilson Music Library, where she has worked since 2005. Sara holds a B.A. in music (emphasis in music history) from Butler University, and M.A. (musicology) and M.L.S. degrees from Indiana University. Sara coordinated the SEMLA task force responsible for the update of the Directory of Music Collections in the Southeast United States, and she has recently been appointed as the Co-Coordinator of the Social Responsibilities Roundtable for MLA. Sara plays flute, and her research interests include intellectual freedom and information literacy.

Scott Phinney is Music Cataloger at University of South Carolina, where he has worked since 2005. He holds an A.B. in Music from Davidson College, and an M.S.L.S. from University of North Carolina at Chapel Hill, where he served as a Graduate Research Assistant in the Music Cataloging Unit. For the Southeast Music Library Association, he serves on the Music Library Collections Update Committee and also serves as the interim Secretary/Treasurer. He has been a member of MLA since 2004 and is involved with the Education Outreach Committee. Scott is also a member of the Music OCLC Users Group, Online Audiovisual Catalogers, and the South Carolina Library Association. Scott performs on oboe, trombone, and hand bells, and his research interests include remote access to music and hymnology.

Member-at-Large

Grover Baker is the Librarian at the Center for Popular Music, Middle Tennessee State University. As the Center's sole librarian, his responsibilities include acquiring and cataloging new books and materials for the Center's Reading Room as well as providing reference service for researchers. He is actively participating in the planning and implementation of Tennessee's Volunteer Voices digital library, helping to develop that project's procedures for digitizing sheet music. Grover joined the staff of the Center in January of 2006, having spent the previous ten years working in the music library of Belmont University. Additionally, he has served as Minister of Music and pianist for churches in Tennessee and Kentucky. Grover holds an M.S. in Information Sciences from the University of Tennessee, Knoxville, a Master of Church Music with a second major in conducting from The Southern Baptist Theological Seminary, and a B.M. in Church Music from Belmont University. An active member of SEMLA and MLA since 2005, Grover currently serves on the Reference Subcommittee of the MLA Educational Outreach Program. His presentation, "Monkey Biz-ness (Down in Tennessee)," delivered at the 2006 SEMLA Annual Meeting in Columbus, GA, was selected as SEMLA's nominee to the MLA Best of Chapter Competition and is scheduled for publication in *Music Reference Services Quarterly*. Grover serves on a rotating basis as pianist for his church, where he also sings baritone in the choir and plays trumpet in the brass ensemble.

Alicia Hansen is Music & Instruction Coordinator at the J. Edgar & Louise S. Monroe Library at Loyola University New Orleans. She holds a BFA from Tulane University, an MME from University of Oklahoma, and an MLIS from Louisiana State University. Alicia is chair of the Facilities Subcommittee of the Music Library Association, and has been a member of that subcommittee since 2004. She is also a member of the ACRL's Fine Arts and Instruction groups, and a member of the International Association of Music Libraries. She has been a member of SEMLA since 2001, and is happy to host SEMLA's annual conference at Loyola in 2009.

MINUTES

Southeast Chapter, Music Library Association
 Interim Business Meeting
 Pittsburgh, PA
 Lynne Jaffe, chair, presiding
 March 2, 2007
 49 in attendance

- I. Call to order at 7pm
- II. Minutes for annual meeting in October 2006 were approved as corrected—Kevin Kelly's name was misspelled.
- III. Treasurer's report

**Southeast Chapter of the Music Library Association
 Treasurer's Report
 For period October 6, 2006 to February 26, 2007
 Submitted by Kirstin Dougan
 Pittsburgh, PA
 March 2, 2007**

NET WORTH as of October 6, 2006 **\$18,809.06**

INCOME

Membership dues	\$80.00
SEMLA 2006 Annual meeting registrations/banquet	\$795.00
Interest on checking account (as of 1/31/07)	\$4.12
<u>Interest on money market account (as of 1/31/07)</u>	<u>\$6.90</u>
TOTAL	\$886.02

EXPENSES

SEMLA 2006 Annual meeting expenses	
<i>Banquet fee</i>	\$1460.00
<i>LAC R. Chodacki-Ford reimbursement</i>	\$63.67
<i>Breaks catering</i>	\$538.21
<u>Jaffe reimbursement—Boye get well gift</u>	<u>\$23.37</u>
TOTAL	\$2085.25

Checking account balance as of 02/26/07	\$13,507.93
Money Market account balance as of 02/26/07	\$4,101.90

NET WORTH as of February 26, 2007 **\$17,609.83**

MEMBERSHIP (paid as of 02/26/07)

Individual	94
Institutional	5

10 • Breve Notes

- IV. Welcome to new members and first time attendees
 - Heidi Radtke (University of Miami)
 - Paul Greitzer (University of North Carolina-Chapel Hill)
- V. Web task force
 - Approximately 40 responses to the survey were received; if you haven't done so already, please respond as soon as possible; some modifications are forthcoming to the form.
- VI. Nominating Committee
 - The committee consists of Guy Leach, Scott Phinney, and Sarah Dorsey. There will be elections for Member at Large and Secretary/Treasurer in the fall.
- VII. Best of Chapters
 - The committee consists of Lee Richardson, Tim Gmeiner, and Anna Neal. Grover Baker's "Monkey Business" presentation will be nominated for SEMLA's Best of Chapter.
- VIII. Chapter Grant
 - Proposals are due May 15; send any ideas to Lynne Jaffe.
- IX. SEMLA Oral History Project
 - Jenny Colvin is heading up this effort and hopes to coordinate it with SEMLA's 40th anniversary in 2010; she will send out an email to recruit participants and will be receiving sample questions from the Midwest Chapter's Oral History coordinator.
- X. SEMLA Jacksonville, FL 2007
 - Lynn Jacobson reported that the Jacksonville meeting will be October 18-20, 2007 at the Hampton Inn (\$104 incl. breakfast). Let her know if you are interested in being on the program committee or if you want to give a presentation.
- XI. Future SEMLA meeting sites (changed from last report)
 - a. 2008—East Carolina University
 - b. 2009—joint meeting with Texas chapter; Loyola University
 - c. 2010—40th anniversary meeting; Davidson College
- XII. Old Business
- XIII. New Business
 - a. Richard Golden is retiring from Emory University at the end of March. Please donate to the MLA fund of your choice in his honor should you choose to do so.
 - b. Lenny Bertrand from Tulane updated the chapter on the status of the recovery efforts at the Tulane Libraries post-Hurricane Katrina. The Music Library was especially hard hit. There is a grant project underway through FEMA that would allow for new items to be purchased and cataloged. Some grant money has already been secured to obtain scores and recordings. SEMLA agreed to donate \$1000 [in a later email discussion the SEMLA board increased the amount to \$1500].
- IX. Adjourn at 7:45 pm.



The water taxi crossing the St. Johns River (photo by Lynn Jacobson)

**SEMLA
Southeast Chapter of the Music Library Association
Membership Application Form**

Name:

E-mail Address:

Institutional Affiliation:

Preferred Mailing Address

Street Address:

City, State, Zip:

Fax:

Are you currently a member of the national Music Library Association? Yes No

Membership categories:

Personal \$10.00

Student \$5.00

Institutional \$15.00

Please make your check payable to SEMLA and mail it along with this form to:

Scott Phinney
SEMLA Secretary/Treasurer
University of South Carolina
School of Music
813 Assembly St.
Columbia, SC 29208