

BBQ, Blues, and Beale Street: SEMLA in Memphis

Preview of the 2005 Conference

Anna Neal, Music Librarian, University of Memphis

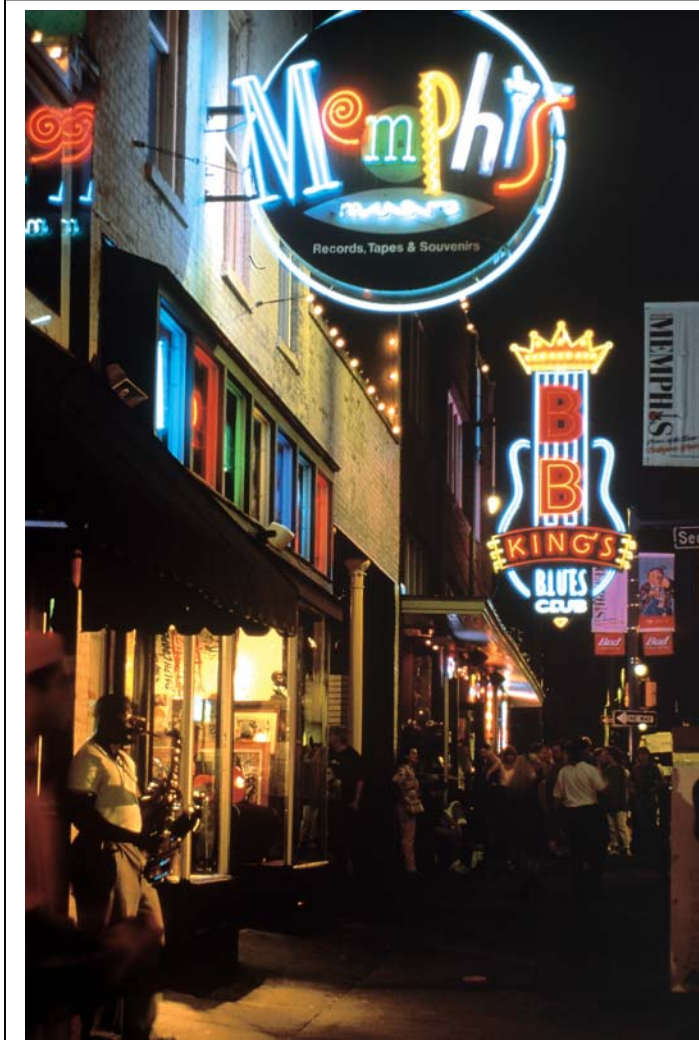
BBQ, Blues, and Beale

What more need we say!? Oh yes, some pretty neat professional stuff, too!

Our 2005 meeting, scheduled for **October 27-29**, will focus primarily on Memphis' rich musical heritage, including both presentations and tours.

We'll open with a reception at the Radisson (soon to be Doubletree) Hotel, again hosted by our long time supporter/sponsor/friend Dana Jaunzemis of Music Library Service Company. Registration will take place concurrent with the reception and again Friday morning.

The Radisson is in downtown Memphis, only a few blocks from Beale Street in one direction and the Mississippi River in the other. Rooms are \$89 + 15% tax, single or double, and reservations should be made through the local phone number, 901-528-1800, by **September 27, 2005**. The conference rate will also be



Beale Street. Photo courtesy of Memphis Tourism and Visitor's Bureau.

honored Wednesday and Saturday nights. The hotel offers a fitness room, wireless internet (802.11b), valet laundry, iron and ironing boards in rooms, coffee service, hair dryers, and data ports. Valet parking is available at \$16 per day. Other parking options nearby will be listed on the conference Web site. A major renovation of both public areas and guest rooms is just being completed. Also renovated is the TGI Friday's adjacent to the main lobby. The restaurant provides room service, as well. Check the hotel Web site for more information, but be aware that the site is not yet updated for the renovations and for the switch to Doubletree.

Friday and Saturday morning sessions will be held at The Center for Southern Folklore, just a couple of blocks from our hotel. The Center is a non-profit organization that "showcases and celebrates the wonders, lifestyles, people, history, and cultures of the South." (from the Center's Fact Sheet) Judy Peiser, co-founder and Director, will share with us the development of the Center's collection as well as some current projects.—*continues p.3*

Contents

From the Chair.....	3
Fund Raising Update.....	4
Member News.....	5
75 th Anniversary Commission.....	5
Weeks Music Library at Miami.....	6

SEMLA Travel Grant.....	7
Officer Election Ballot.....	8
Candidate Biographies.....	9
Conference Registration Form.....	10
Minutes, Interim Meeting, Feb. 2005.....	11

SEMLA

Southeast Chapter of the Music Library Association

Executive Board

DIANE STEINHAUS, *Chair*
University of North Carolina—Chapel Hill

LYNNE C. JAFFE, *Vice-Chair/Chair-Elect*
At-Your-Service: Library Contract
Cataloging

KIRSTIN DOUGAN, *Secretary-Treasurer*
Duke University

LENNY BERTRAND, *Member-at-Large,*
2003-2005
Tulane University

ROBENA ENG CORNWELL,
Member-at-Large, 2004-2006
University of Florida

Archivist

LEE RICHARDSON
University of North Florida

Web Site Editor

LYNN JACOBSON
Jacksonville Public Library (FL)

Newsletter Editor

JOHN LESLIE
University of Mississippi



The Southeast Chapter of the Music Library Association, Inc. (SEMLA), is a non-stock, non-profit organization dedicated to promoting the establishment, use, and growth of music libraries and collections of music materials in the Southeast. It encourages communication and cooperation with libraries and music collections not affiliated with the Music Library Association to determine how the Chapter may be of assistance to the individual library. SEMLA provides a forum for the exchange of ideas regarding all aspects of work with music materials as well as initiating and encouraging activities to improve the organization, administration, holdings, and public services of such libraries and collections. The region covered by the Chapter includes the states of Alabama, Arkansas, Florida, Georgia, Louisiana, Mississippi, North and South Carolina, Tennessee and Puerto Rico.

Membership Information

Membership in SEMLA is available at three levels: Personal (\$10.00 U.S.), Institutional (\$15.00 U.S.), and Student (\$5.00 U.S.). An application for membership appears on the back page of this newsletter. Make checks payable to SEMLA. Send membership applications, renewals, dues, and corrections and updates to:

Kirstin Dougan
Box 90661
113 Mary Duke Biddle Music Bldg.
Duke University
Durham, NC 27708

SEMLA Web Site

Lynn Jacobson, Web Editor
<http://jpl.coj.net/semla/index/html>
jacobson@coj.net

Breve Notes (Newsletter)

John Leslie, Editor

Breve Notes is published electronically on the chapter website three times a year: January, April, and August. Send submissions to:

John Leslie
J.D. Williams Library
P.O. Box 1848
University, MS 38677-1848
Fax: (662) 915-6744
jleslie@olemiss.edu

SEMLA-L

To subscribe, send a message to LISTSERV@LISTSERV.UGA.EDU and type only the following in the body of the message:

SUBSCRIBE SEMLA-L *Your first name Your last name* (substitute name)

You will receive a confirmation from the list.

FROM THE CHAIR

Diane Steinhaus

University of North Carolina—Chapel Hill

“If you come to a fork in the road, take it.” – Yogi Berra

Hot and humid greetings to my fellow Southeasterners! Not a bad time to start thinking about spending a wonderful fall weekend in Memphis, Oct. 27-29, for our annual SEMLA meeting, huh? See Local Arrangements Chair Anna Neal’s cover article in this issue on the plans in the works by her committee and the Program Committee, chaired by Robena Cornwell (with Leslie Kamtman and Anna) for our music-filled weekend. Bring your dancing shoes – it sounds like there’ll definitely be a whole lotta shakin’ going on! And remember, if you know of a staff person or library school student who would like to join the fun, please encourage him/her to apply for the SEMLA Travel Grant, organized this year by Vice-Chair/Chair-Elect Lynne Jaffe.

This marks my final column to you as chair of SEMLA. We’ve accomplished a “whole lotta” this year as a chapter, thanks to the many gluttons for punishment in our midst – We came upon Yogi Berra’s fork in the road... and we took it! All of it! Under Laurel Whisler’s undaunted leadership SEMLA has – so far – raised close to \$20,000 toward the 75th Anniversary commission and other local arrangement expenses for MLA 2006.... Give that woman some chocolate when you see her in Memphis! Y’all have been great sports as this year’s board inflicted upon you ballots to amend the bylaws and constitution to raise chapter dues for the first time, to allow for electronic voting, and to bring other aspects of our documents in line with current practice (ahem); Sarah Dorsey and her many helping hands (is that the name of her new band?) revised the Chapter Officers Handbook last Fall. Look there to find out everything you’ve ever wondered about being a chapter officer (do they really hold email discussions in Klingon?). And then let a board member know if you’re interested in running for an office or being on a committee in the future. We’re always looking for new blood!

This year we also held a special election mid-year to fill the office of Vice-Chair/Chair-Elect, affording the long-awaited Lynne Jaffe possession of the yellow plastic hammer of despotism come the October meeting. I am thrilled that Lynne is finally getting the chance to wield that hammer. She will be a great chair and I look forward to serving with her as Past Chair for the next year.

Alicia Hansen and the Web Task Force (Steve Mantz, Lee Richardson, and Lynn Jacobson), charged with producing a 4th edition of the Directory of Music Collections in the Southeast United States, have been working hard on designing

a web-based questionnaire for libraries to fill out. This is a much needed revision to a very valuable resource. Make sure your library is included!

In this issue are ballots for electing a Member-at-Large and Secretary/Treasurer. Many thanks to Member-at-Large and Nominating Committee Chair Lenny Bertrand and his committee (David Guion and Lois Kuyper-Rushing) for presenting us with yet another stellar slate. Please remember to vote (either electronically or paperly)!!

And many thanks once again to John Leslie for this his third high-class edition of Breve Notes. You have no idea how good he is at herding cats! Our newsletter and website (thank you, Lynn Jacobson!) are how the world and our parent organization know us best and I’m very proud of what they see!

All the best,

Diane Steinhaus
UNC Chapel Hill

SEMLA in Memphis—continued from front page

We will also be hearing from Nashid Madyun, Curator/Director of the Stax Museum of American Soul Music. Stax Records was home to Rufus and Carla Thomas, Otis Redding, Isaac Hayes, Booker T. and the MG’s, and many more. The Museum is part of Soulsville USA on the site of the old Stax Records. Soulsville USA also includes Stax Academy, which offers educational opportunities for at-risk youth and is opening a college prep, music-enriched charter school for Fall 2005.

Bill Ellis, most recently a music reviewer for The Commercial Appeal in Memphis and currently an ethnomusicology graduate student at the University of Memphis, will speak on current Memphis musical trends. He’ll include a look at the local hip hop scene, which is receiving so much buzz from the new made-in-Memphis movie Hustle and Flow.

Covering a different era will be Louis Cantor, author of *Wheelin’ on Beale: How WDIA-Memphis Became the Nation’s First All-Black Station and Created the Sound that Changed America*. B. B. King and Rufus Thomas spent some of their early careers at WDIA, and the station was instrumental in introducing blues and other race music to a white culture steeped in country music.

The remainder of the morning will be devoted to our business meeting.

Friday afternoon is being left open for tours to sites that will be included in the tour offerings for MLA in February. Individuals will be able to choose one or two of the sites they

--continued on p. 4

4 • Breve Notes

SEMLA in Memphis—continued from p.3

prefer to visit, and we will go in small groups. Among the options are the Stax Museum of American Soul Music, Memphis Rock 'n' Soul Museum, Sun Records, Graceland, and the National Civil Rights Museum. We will also arrange for visits on Saturday afternoon for those who are staying after the meeting.

Friday's banquet will be a down-home affair at The Center for Southern Folklore. We'll have baked chicken/pork chops/veggie lasagna with greens and yams and cobbler, along with entertainment (and some education) by David Evans, an authority on music of the region, author of several books and articles, guitar and harmonica player, and professor at the University of Memphis. Elmo Thomas will join him on harmonica. Cost of the banquet is \$30, including tax and gratuity but excluding wine or beer, which may be purchased. For the vegetarians among us, be assured the dinner will meet your needs.

The banquet will finish by 8:30 p.m., so those who are so inclined can walk on over to Beale Street and visit a few clubs.

Saturday morning's program will be more library-specific. North Carolina School of the Arts' Leslie Kamtman, Music Librarian, and Christia Thomason, Music Cataloging Librarian, will fill us in on their library's use of iPods for music reserves. Betsy Park, Head of Reference at the University of Memphis, will tell us about the new Information and Communication Technology Assessment from Educational Testing Service. The University of Memphis is one of 12 schools coordinating with ETS to develop this new information literacy assessment tool.

For those staying Saturday night, we'll gather at Anna Neal's house for an early and casual dinner and conversation.

We're excited about the sessions and other activities planned for the conference, and we look forward to sharing it all with as many SEMLA-ites as possible. Watch the conference Web site for further information about Memphis attractions and events plus travel directions.



The Mississippi River at Memphis (Memphis Tourism & Visitors Bureau)

Program Committee: Robena Cornwell, chair, Leslie Kamtman, Anna Neal.

Local Arrangements Committee: Anna Neal, chair, Maria DeBacco, Pam Dennis, Carol Lowry, Gina Milburn, Dennis Wujcik.

Fund Raising Update

Laurel Whisler, Southern Wesleyan University

Fund raising reports keep getting better and better. Thank you for all that you are doing to help us reach our goal. As of July 14, we had donations in hand totaling \$14,000, and additional pledges to bring our total to \$18,990!

Great thanks goes to the following SEMLA institutions and library deans/directors that have sent donations:

University of Georgia
University of Tennessee - Knoxville
Loyola University Libraries
Meredith College
University of North Carolina - Greensboro Jackson Library
Louisiana State University Libraries
University of Mississippi - JD Williams Library
Davidson College

Thanks also to those institutions and libraries that have made pledges:

Vanderbilt Music Library
Furman University Libraries and Music Department
University of North Carolina - Chapel Hill Libraries
Duke University Perkins Libraries

The new fiscal year is here, so perhaps "the powers that be" will be willing to consider a gift. Most institutional gifts have been \$500, but one topped out at \$750!

Also, I'm sure some of you have been able to talk with local businesses about supporting the Memphis meeting. Please be aware that the address is out of date on your contact/reply sheet that I've asked you to send me. Send mail to me at Southern Wesleyan University, PO Box 1020, SWU Box 409, Central, SC 29630-1020, lwhisler@swu.edu. Please do be in touch with me and let me know what pledges or gifts you are working on.

I'd like to thank all of you for your hard work! With your help, I am confident we'll be in good shape for funding the MLA Conference.

Member News

Sara Beutter has been appointed Music Librarian for Public Services at Vanderbilt as of July 18. Sara is an MLS graduate (music librarianship specialization) of Indiana University. In addition, she has the MA degree in musicology from Indiana and the BA with a major in flute from Butler University. Sara has worked the last several years at the Cook Music Library at Indiana in User Services as a Library Associate while completing her dual master degrees.

Kirstin Dougan has been appointed Interim Head of the Duke University Music Library while a search is underway for a new Head of the library.

Lynn Jacobson has been promoted to Head of Cataloging at Jacksonville Public Library.

Nara Newcomer is the Assistant Music Librarian at East Carolina University, Greenville, NC, where she will be overseeing music cataloging operations and performing a variety of other technical and public services duties. Nara earned her MLS and MA in Music History from the State University of New York at Buffalo. Her MA thesis was titled "The American Organ Reform, 1945-1960." While in Buffalo, Nara was a Graduate Assistant in the Music Library, and she has also worked as Visiting Assistant Librarian (Cataloger) at Shepherd University in Shepherdstown, WV. In addition to library work, Nara is an organist and church musician.

Scott Phinney is a recent graduate of the School of Information and Library Science at the University of North Carolina at Chapel Hill. He has an A. B. in Music from Davidson College, where he studied the oboe and dabbled with other winds. Originally from Western New York, he has worked in the Department of Learning Resources and Public Engagement for the Buffalo Philharmonic Orchestra. In July 2005, he joined the faculty of the University of South Carolina as Music Cataloger. Active in SEMLA and MLA since 2004, he is also a member of MOUG and OLAC. He lives in Columbia, SC, where he spends much of his spare time playing disc golf. He may be contacted by email at: phinney@gwm.sc.edu

Laurel Whisler is now Assistant Director of Library Services and Reference Librarian at Southern Wesleyan University, in Central, SC. In her new position she has the majority of the responsibility for reference, library instruction, and ILL. The student body consists of about 600 traditional students in residence on campus and around 2000 adult and graduate students at 5 sites across the state: Central, Greenville, Columbia, North Augusta, and Charleston. Laurel will be traveling to these sites periodically to provide instruction. The library's staff consists of the Director, Laurel, a cataloger, acquisitions assistant, serials assistant, and circulation assistant. She enjoys the change in scenery and responsibility, and looks forward to staying involved in reference and instruction.

75th Anniversary Commission

Augusta Read Thomas has submitted a "blueprint" copy of the commissioned score to the Memphis Symphony, and the engraving process has begun.

Here is a comment from the composer and some information about the piece:

"It was great fun to compose this new piece - to tailor-make it for the occasion - and I eagerly await the premiere! Hope you will like it! THANKS!!!! With all admiration!

Gusty

[DRAFT OF FRONT MATTER]

SHAKIN'

For orchestra

Homage to Elvis Presley and Igor Stravinsky.

1 piccolo

2 flute

2 oboe

1 English horn in F

3 clarinet in Bb (3rd doubles bass clarinet in Bb)

1 alto saxophone in Eb

2 bassoon (2nd doubles contra bassoon)

4 French horn in F

3 trumpet in C (it is optional for trumpet I to double piccolo trumpet in Bb)

1 trombone

1 bass trombone

1 tuba

3 percussionists (Unless otherwise specified, please use the most common mallet or beater):

Percussion #1: Vibraphone (motor at times on, and at times off) and 1 bow needed, very large triangle, 2 bongos, 2 low conga drums, medium suspended cymbal

Percussion #2: Tubular chimes (share with player #3), crotales (2 octaves and 1 bow needed), large suspended cymbal, very large bass drum, large triangle

Percussion #3: Tubular chimes (share with player #2) glockenspiel, 3 low Tom-Toms (Graduated in pitch: very low, low, and moderately low), small triangle, sizzle cymbal, Chinese cymbal, and small suspended cymbal (bow needed), Piano (Inside the piano plucking is indicated as PIZZ; this is cancelled with ORD.), Harp.

STRINGS (approx.: 14,11,9,8,7= PLAYERS)

NOTES: DURATION: 8 minutes; TRANSPOSED SCORE; Divisi sections in the strings should always be split as INSIDE AND OUTSIDE; 8 violins require practice mutes; String bowing suggestions and preferences are marked by the composer but can be altered at the discretion of the players and conductor. Piano should be located with the percussion in the back of the orchestra."

We're awaiting word from Schirmer on whether the score will be available for purchase.

New Weeks Music Library at Miami

Nancy Zavac, University of Miami

The new \$9.9 million Weeks Music Library and Technology Center opened for the start of the Spring Semester, January 19, 2005. The facility was made possible thanks to an \$8 million gift from longtime University of Miami benefactors, Marta and Austin Weeks. Response to the new facility from students, faculty, and visitors has been overwhelmingly positive. Planning for a new Music Library started ten years ago, long before the funding was available. The Music Library staff wrote a program statement and had input throughout the whole process, meeting with the architects, furniture consultants, lighting consultants, audio visual equipment consultants, and staff from Information Technology.

All music-related materials are now housed in a single location for the first time since the Music Library opened at UM in 1957. The books, reference books, journals, videos, and DVDs were moved from the Otto G. Richter Library, the scores and sound recordings came from the Albert Pick Music Library, and back issues of music journals were brought back from the South Campus storage facility.

The new library shares the first floor space with the School of Music Technology Center, which has 6 classrooms including 2 Keyboard Labs, 2 Multimedia Instruction and Learning Labs, Music Engineering Technology Lab, Electronic Music lab, and a Media Writing and Production Lab. The Technology Center has a separate entrance, its own staff and hours.

On the first floor of the Music Library there is one Service Desk, 2 large listening rooms and 2 small group listening rooms, a secure stacks area for CDs, LPs, videos, and the Musical Theater collection, staff offices, work areas and a staff break room. Stacks for scores, books, theses and journals, a seminar room and one group listening room are located on the second floor. There are large, comfortable seating areas near the windows, including one with a spectacular view of Lake Osceola. There are a total of 18 computer stations, 8 on the first floor and 10 on the second floor. The entire building has wireless technology so patrons can easily use laptops. We were able to hire 2 new full time staff members: an evening Circulation Supervisor and a Computer Lab Technician. Our staff now totals 2 librarians and 6 full time paraprofessional staff.

Some improvements in the new Weeks Music Library as compared to our old facility include: all music-related materials in a single location with a trained staff to provide assistance; adequate study areas with various types of seating; group listening rooms; a keyboard to play through scores in the library; computer stations with CD/DVD playback; a computer technician on staff; wireless technology; a seminar room to hold classes; later night hours; 3M security system; a video monitoring system; adequate staff work space and



storage; a staff break room and offices (with doors!) for the two librarians.

For more information, pictures, and floor plans of the Weeks Music Library, please visit our website at:
<http://www.library.miami.edu/music/home.html>

SEMLA Travel Grant

Applications are now being accepted for a travel grant, funded through the generosity of SEMLA. In recent years, MLA has helped us in this endeavor, but we decided to continue this practice with our own funds. Supporting our colleagues is clearly something SEMLA feels strongly about. The grant will support portions of travel, meeting registration, hotel, and subsistence expenses to attend SEMLA's annual meeting, hosted by the University of Memphis at the Radisson/Doubletree Hotel and the Center for Southern Folklore in Memphis, Tennessee, **October 27-29, 2005**. Please note that music library paraprofessionals/support professionals and library school students are eligible for this opportunity and are encouraged to apply.

The grant may be up to \$400 for one individual or may be divided between two individuals at the discretion of the grant committee.

I. Applicants must reside in one of the states or territories comprising SEMLA (Alabama, Arkansas, Florida, Georgia, Louisiana, Mississippi, North and South Carolina, Tennessee and Puerto Rico), and also be in at least one of the following eligible categories:

- a) A graduate library school student (by the time of the conference in October, 2005) aspiring to become a music librarian;
- b) A recent graduate (within one year of degree) of a graduate program in librarianship who is seeking a professional position as a music librarian;
- c) A music librarian (holding a Master of Library Science degree or qualifications granting an equivalent status at her/his employing institution, e.g. a certified archivist with other graduate degree working extensively with music materials) in the first two years of her/his professional career, or;
- d) A library paraprofessional/support professional working with music materials as a significant portion of his/her job responsibilities.

Applicants in categories a-c must not have attended more than one prior SEMLA meeting before applying for the grant. This restriction does not apply to paraprofessionals/support professionals.

II. Applicants must submit the following to arrive by **September 12, 2005**:

1. A letter of application which includes an explanation of the reasons for attending the SEMLA annual meeting, a justification of financial need, and a budget (the single or double room rate in Memphis, TN is \$89 plus tax). For those applicants currently working in libraries or archives, justification of financial need must include evidence that one has sought financial support from one's employing institution to attend the meeting and that such request was either denied or insufficiently met;
2. A current résumé or vita;
3. Two letters of support. Where applicable, one of the letters should be from a current supervisor.

Award recipients who are not already members of SEMLA are expected to join prior to attending the October meeting. A membership form is available on the SEMLA web site: <http://jpl.coj.net/semla/app.html>.

Annual student membership in SEMLA is currently only \$5.00; a regular membership is \$10.00.

Hotel accommodations will be funded at the double-occupancy rate, i.e., one-half of the \$89.00 plus tax mentioned in II/1, preceding.

III. Mail application and supporting materials to arrive via U.S. post or electronically by **September 12, 2005** to:

Lynne Jaffe
Chair, SEMLA Travel Grant Committee
143 Woodland Hills Blvd.
Madison, MS 39110

For more information, contact Lynne by e-mail (at_your_service@bellsouth.net) or phone (601) 853-7432.

Recipients will be notified by September 14, 2005, and announced on SEMLA-L, the chapter's electronic discussion list, immediately thereafter.

8 • Breve Notes

Please note that SEMLA may elect to pay directly for travel and hotel expenses on the recipient's behalf and only supply the balance (if any) of an award following the Atlanta meeting. If mileage for a personal vehicle is awarded, it will be paid at the current IRS rate of \$0.405 per mile, also after the meeting.

It is our hope that this support of chapter members who are beginning their careers or whose abilities to travel to meetings are compromised by lack of institutional funding or other circumstances will assist all of us in meeting the ongoing recruitment and continuing education objectives outlined in MLA's Plan 2001.

Southeast Music Library Association
2005 Officer Election Ballot

Candidate biographies appear on page 9.

Vote for only one candidate for each office.

Secretary / Treasurer:

_____ Kirstin Dougan

_____ Guy Leach

Write-in candidate: _____

Member-at-large:

_____ Catherine Gick

_____ Alicia Hansen

Write-in candidate: _____

Members have TWO options for your method of voting:

- 1) Email your vote to Lynne Jaffe, Vice-Chair/Chair-Elect, by Oct. 21:
Lynne Jaffe at_your_service@bellsouth.net

IMPORTANT!

Make sure your full name appears somewhere on the email.

- 2) Bring this paper ballot to the Memphis meeting, or postmark the ballot to Lynne by Oct. 21 at:

Lynne Jaffe
At Your Service: Library Contract Cataloging
143 Woodland Hills Blvd.
Madison, MS 39110-7823

IMPORTANT!

Print or sign your name on the outside of the mailing envelope
so that your membership status can be verified!

Candidate Biographies

Secretary/Treasurer

Kirstin Dougan is Public Services Librarian and Interim Head at the Duke University Music Library. She has been a member of SEMLA since 2003 and has served as its secretary/treasurer since spring of 2004. Before coming to Duke, Kirstin was a metadata librarian at University of Wisconsin-Madison Libraries with their Digital Content Group. She earned her MLS from University of Wisconsin-Madison in 2001, her MM in viola performance from Ball State University (IN), and her BM in viola performance from Lawrence University (WI).

In 1992 **Guy Leach** earned an M.L.S. from the University of Michigan, specializing in music librarianship. His prior educational background includes a B.S. in Music Education (Bob Jones University) followed by a M.A. in Musicology from Converse College, where his research focused on eighteenth-century harpsichordist Christophe Moyreau. Guy worked in the Archives Division of Atlanta's Auburn Avenue Research Library on African American Culture and History. After that, he was the Technical Services Librarian at Smyrna Public Library, Smyrna, Georgia. He currently serves as the librarian for Music, Art & Design, and Foreign Languages at the Georgia State University Library. His primary duties include collection development, providing class instruction and individual consultations to students and faculty, and assisting patrons at the general reference desk. In addition to these duties, he serves as the library liaison to the university's Office of Disability Services and as a member of the Liaison Web Task Force that supports development of the library's content management system and the liaison's web pages. Guy has served on the local arrangements committee for the 2004 Annual SEMLA Meeting in Atlanta, and currently serves on the Statistics Subcommittee of the Administration Committee of MLA.

Member-at-Large

Catherine Gick is Music Librarian at the Anne Potter Wilson Music Library, Blair School of Music, Vanderbilt University, Nashville, TN, where she has been the sole music cataloger since July 2002. She has been an active member of various library-wide committees at Vanderbilt, including the Cataloging and Authorities Advisory Group, Technology Training Coordinators, Technology Support Coordinators and Digital Collections Committee as well as the Institutional Repository Implementation Group and the Information Management Group, a Strategic Planning subcommittee. Catherine holds a B.M.E. from the University of Evansville, Evansville, IN and an M.L.S. with a specialization in music from Indiana University, Bloomington, IN. While at Indiana University she worked as a cataloger in the William and Gayle Cook Music Library and the Archives of Traditional Music. Additionally, she was very active in the student chapter of the American Library Association, serving as treasurer (Spring-Summer 2001), vice president (Fall 2001), and president (Spring 2002). She is currently an active member of the Music Library Association and the Southeast Music Library Association. She served as a member of the SEMLA Program Committee in 2003 and Best of Chapters Nominating Committee in 2004.

Alicia Hansen is Music Collections & Services Coordinator at the J. Edgar & Louise S. Monroe Library at Loyola University New Orleans, where she has been the music librarian since January 2002. She has been an active member of various library-wide committees at the Monroe Library, including the Web Team, Reference Team, User Education Team, chair of the Library/Music Committee, and a Plagiarism Panel, among others. She is active with Information Literacy initiatives and will team-teach "Technology for Music Students", a first for the Monroe Library, with Steve Dankner in Fall 2005. Alicia holds her undergraduate degree from Tulane University in Piano Performance and English; her Master's in Music Education (Piano Pedagogy) is from University of Oklahoma; her MLIS is from LSU, where she did an independent study with Lois Kuyper-Rushing and an internship with the Historic New Orleans Collection. Alicia was awarded a travel grant both from SEMLA and from MLA in 2001/2002, and has presented for both organizations on the issue of collaborative success in moving a music library. She is part of the Directory Questionnaire task force in SEMLA, and is a member of the Facilities Subcommittee in MLA. She is the most recent editor of that subcommittee's bibliography, published online since 2003.

2005 SOUTHEAST MUSIC LIBRARY ASSOCIATION CONFERENCE

October 27-29, 2005
 Memphis, Tennessee

Name _____
 Title _____ Institution _____
 Address _____
 City/State/Zip _____
 Work Phone _____ Home Phone _____
 E-Mail _____ FAX _____
 I plan to attend: Thursday reception _____ Friday conference _____ Friday banquet _____ Saturday conference _____
 I will arrive by: plane _____ car _____ other _____
 I plan to stay at: conference hotel _____ other _____

Choose 1 or 2 tours for Friday afternoon. Check the links for prices and other information. We will organize small groups in private cars. If you are staying Saturday afternoon and wish to add 1 or 2 tours, please do so. These are preferences only at this point. Final plans will be made at registration in Memphis.

- | | | |
|--------------|----------------|--|
| Friday _____ | Saturday _____ | Graceland (http://www.elvis.com/graceland/) |
| _____ | _____ | Memphis Rock 'n' Soul Museum (http://www.memphisrocknsoul.org/) |
| _____ | _____ | National Civil Rights Museum (http://www.civilrightsmuseum.org) |
| _____ | _____ | Stax Museum of American Soul Music (http://www.soulsvilleusa.com/) |
| _____ | _____ | Sun Studio (http://sunstudio.com/index.html) |

Fees:	No.	Cost	Total
Early registration (postmarked no later than September 27)	_____ @	\$30.00	_____
Student early registration (postmarked no later than September 27)	_____ @	\$15.00	_____
Regular registration (postmarked September 28 and later)	_____ @	\$40.00	_____
Student regular registration (postmarked September 28 and later)	_____ @	\$20.00	_____
Single day registration	_____ @	\$20.00	_____
Banquet	_____ @	\$30.00	_____
SEMLA membership (regular)	_____ @	\$10.00	_____
SEMLA membership (student)	_____ @	\$5.00	_____
TOTAL FEES:			_____

Note: Late registrations and walk-in registrations are welcome, but it is helpful if you let us know in advance that you are coming.

Please make checks payable to SEMLA and mail to: Anna Neal
 SEMLA Registration
 Music Library
 115 Music Building
 University of Memphis
 Memphis, TN 38152

MINUTES**Interim Business Meeting**

Southeast Chapter, Music Library Association

February 17, 2005 Vancouver, Canada

Diane Steinhaus, Chair, presiding

38 in attendance

I. Call to order at 7:14 PM with a bad Canadian joke.

II. Minutes

The minutes of the October 9, 2004 meeting in Atlanta, GA were approved.

III. Treasurer's report (Dougan)

**Southeast Chapter of the Music Library Association
Treasurer's Report
For period Oct 7, 2004-February 10, 2005
Submitted by Kirstin Dougan
February 17, 2005**

Net worth from last report (October 6, 2004)	\$9841.12
--	------------------

INCOME

Membership dues	\$217.00
MLA Commission gifts	\$755.00
Other gifts	\$15.00
Meeting registrations/banquet	\$700.00
Interest on checking account (as of 1/31/2005)	\$1.50
<u>Interest on money market account (as of 1/31/2005)</u>	<u>\$2.74</u>
TOTAL	\$1691.24

EXPENSES

Conference expenses (Atlanta reception and banquet)	\$1803.96
Travel grant winner reimbursement	\$231.00
Conference registration refund (non-attendee)	\$65.00
Commission fundraising expenses (copies, postage, etc)	\$165.15
<u>Bank fees and checks (incl. NSF deposit fee*)</u>	<u>\$129.00</u>
TOTAL	\$2394.11

Checking account balance as of 2/10/2005	\$5072.80
Money Market account balance as of 2/10/2005	\$4065.45

NET WORTH as of February 10, 2005	\$9138.25
--	------------------

*The member who bounced their \$110 SEMLA annual meeting registration and donation checks resubmitted the funds.

MEMBERSHIP (paid as of 2/10/2005)

Individual	89
Institutional	5

12 • Breve Notes

IV. Welcome to new members and first time attendees (Steinhaus)

Those members new to SEMLA and/or attending their first MLA annual meeting were welcomed, including Josh Chance, a student at the University of Southern Mississippi, and Will Hannah, a student in the University of North Carolina-Chapel Hill's SILS program.

V. Web task force-directory of collections (Hansen)

The Board gave its approval for the collection surveys to be distributed by the task force (Lee Richardson, Lynn Jacobsen, Alicia Hansen).

VI. Nominating Committee (Bertrand)

The Nominating Committee (Lenny Bertrand, Lois Kuyper-Rushing, David Guion) put out a call for nominations for a new chair-elect, as Margaret Kaus has taken a new position at Kansas State University, where she does original cataloging for music and other materials. Nominees must be members in good standing and meet any other criteria named in the bylaws (which are available online). Elections will be held in April.

VII. New Business

- A. Goodbyes and well-wishes were extended to John Druessedow, Rashidah Hakeem, and Joan McGorman. John will be retiring after 18 years of service at Duke University. He is looking forward to spending more time as a gardener and a grandfather. Rashidah is retiring after 7 years at Ole Miss and is looking forward to practicing and teaching piano. Joan is relocating to Toronto this summer after 7 ½ years at the SE Baptist Seminary. She will be rejoining CAML.

“Friends of” funds have been created for John and Rashidah in MLA and people can donate to the MLA 75th celebration in their name. John favors the Epstein Fund and donations can be made to that fund in his name.

- B. Pauline Bayne is chairing the MLA Nominating Committee and reminded us that there are several big elections this year—members-at-large, recording secretary, and vice president/president-elect.

VIII. Old business/IX. Memphis SEMLA 2005 and MLA 2006

- A. Memphis SEMLA 2005 meeting

Anna Neal (Local Arrangements Chair) provided a handout with details for planning.

- October 27-29
- Radisson ~\$92/night
- Banquet-probably Isaac Hayes ~\$30/35 head
- Will sample tours and do other reconnaissance for the MLA 2006 meeting

Discussion centered around whether we wanted to try to save on expenses for this meeting so that we would have more money to put toward MLA 2006 and whether we should have an abbreviated program so that we could focus our time in Memphis on planning for MLA 2006.

- B. Memphis MLA 2006 meeting

Anna Neal (Local Arrangements Chair) provided a handout with details for planning.

- Peabody \$174/night
-

- C. 75th Anniversary Commission Fundraising

Laurel Whisler updated us on the fundraising. \$5095 has been pledged, with \$4195 paid. We have moved into Phase 2—corporate fundraising. Several SEMLA folks were sent packets and anyone else who has suggestions of businesses to contact should get in touch with Laurel BEFORE contacting them, to make sure they aren't approached by more than one person. Laurel has gotten permission to contact vendors at MLA and to approach the general MLA membership (Phase 3).

Our overall goal is \$16,000-20,000 (\$10,000 for the commission, the rest for other LAC expenses. With the pledges and other money in our accounts we are half way there. The only expense we won't have is a local arrangements reception, which has been replaced with the MSO concert to premiere the commission (but we are hoping to subsidize ticket prices if we can).

The last phase (Phase 4) will be asking our own institutions (libraries and music departments) for donations.

The composer will be announced at the MLA Business Meeting on Saturday.

X. SEMLA 2006 (Ford)

Columbus State University in Columbus, GA
Possible dates: Oct 5-6, 12-14, 19-21 or Nov 9-11

XI. Other announcements

- A. Lois's son's band, the Benjy Davis Project is doing very well—perhaps we can book them for MLA2006?
- B. Phil Vandermeer invited anyone interested in reviewing books for NOTES to contact him.

XII. Adjourned at 8:49pm



Stax Museum. Photo courtesy of Memphis Tourism & Visitors Bureau.