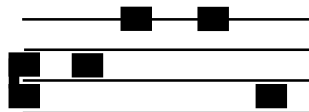


# BREVE NOTES



Newsletter  
Southeast Chapter  
Music Library Association

No. 70

January 2004

## 2003 SEMLA Annual Meeting Held in Chapel Hill and Durham Lee Richardson, Music Cataloger, University of North Florida

The 2003 SEMLA Annual Meeting was held at the University of North Carolina at Chapel Hill and Duke University. For three days, October 23-25, meeting attendees had the opportunity to hear wonderful presentations, see the beautiful Chapel Hill and Duke areas, and enjoy delicious food.

The opening reception, generously sponsored by the Music Library Service Company, was held in the UNC-Chapel Hill Music Library, within the Louis Round Wilson Library. Attendees sampled delicious treats and toured the new Music Library facilities. Also, SEMLA's beautiful redesigned Web site was unveiled courtesy of Webmaster Lynn Jacobson (Jacksonville Public Library).

Friday's sessions were held in the Pleasants Family Assembly Room in the Louis Round Wilson Library. Dr. Joe A. Hewitt, University Librarian and Associate Provost at UNC-Chapel Hill welcomed the group and shared information about the University's libraries.

First up was the panel session, "Country Music in the Academy," moderated by Philip Vandermeer (UNC-Chapel Hill). Steve Weiss, Curator of the Southern Folklife Collection at UNC-Chapel Hill, provided a fascinating look into the origins of the Southern Folklife Collection. He also discussed interesting gifts and general information about the collection.

Jocelyn Neal, Professor of Music at UNC-Chapel Hill, presented information on country music courses in colleges and universities. Her presentation included discoveries about current academic offerings in country music and issues she deals with when using country music in her classes.

Gary Boye, Music Librarian at Appalachian State University, concluded the panel session with information on collection development for country music. He showed the group some older recordings as well as CD box sets. His list of "Top 20 Recom-

mended CD Box Sets in Country Music" can be found at: [http://jpl.coj.net/semla/conference2003/country\\_CD\\_sets.doc](http://jpl.coj.net/semla/conference2003/country_CD_sets.doc).

Meeting attendees then divided into groups for tours of the Southern Folklife Collection. Curator Steve Weiss and assistant Kelly Kress each led a group for an interesting look at an important collection.

After lunch, Kirstin Dougan from Duke University presented "Metadata for Music Librarians." Included was a definition of metadata, how it is being used, and specifically how music librarians can use metadata. Some of the major metadata schemes, such as Dublin Core, MODS, and OAI, were briefly explained. This presentation can be found at: <http://www.lib.duke.edu/music/>



*Registration and Opening Reception, UNC-Chapel Hill Music Library.*

SEMLA2003.

David Hursh from East Carolina University then gave the presentation, "Calling All Academic Library Reference Desks: A Research Project Overview and Refresher." The presentation described a research project to gather information related to reference desks in music libraries. The resulting article from this

See *Conference summary*, page 4

### **Contents**

<i>From the Chair</i> . . . . .	3
<i>Member News</i> . . . . .	3
<i>East Carolina Univ. Receives Gift</i> . . . . .	5
<i>Minutes, Business Meeting</i> . . . . .	6

# SEMLA

## Southeast Chapter of the Music Library Association

---

---

### Executive Board

DIANE STEINHAUS, *Chair*  
University of North Carolina–Chapel Hill

SARAH DORSEY, *Past Chair*  
University of North Carolina–Greensboro

DAVID HURSH, *Secretary/Treasurer*  
East Carolina University

LAUREL WHISLER, *Member-at-Large, 2002-2004*  
Furman University

LENNY BERTRAND, *Member-at-Large, 2003-2005*  
Tulane University

---

---

The Southeast Chapter of the Music Library Association, Inc. (SEMLA), is a non-stock, non-profit organization dedicated to promoting the establishment, use, and growth of music libraries and collections of music materials in the Southeast. It encourages communication and cooperation with libraries and music collections not affiliated with the Music Library Association to determine how the Chapter may be of assistance to the individual library. SEMLA provides a forum for the exchange of ideas regarding all aspects of work with music materials as well as initiating and encouraging activities to improve the organization, administration, holdings, and public services of such libraries and collections. The region covered by the Chapter includes the states of Alabama, Arkansas, Florida, Georgia, Louisiana, Mississippi, North Carolina, South Carolina, Tennessee, and Puerto Rico.

### Membership Information

Membership in SEMLA is available at three levels: Personal (\$5.00 U.S.), Institutional (\$5.00 U.S.), and Student (\$2.00 U.S.). An application for membership appears on the back page of this newsletter. Please send membership applications, renewals, dues, and corrections and updates to:

David Hursh  
Music Library  
Fletcher Music Center  
East Carolina University  
Greenville, NC 27858-4353

---

### SEMLA-L

To subscribe, send a message to  
**LISTSERV@LISTSERV.UGA.EDU** and type only the following  
in the body of the message:

**SUBSCRIBE SEMLA-L** *Your first name Your last name*  
(substitute your name)

You will receive a confirmation message from the list.

---

### SEMLA Web Site

Lynn Jacobson, Web Editor

Visit SEMLA on the Web: <http://jpl.coj.net/semla/index.html>

### *Breve Notes*

Alan Ringwood, Editor

*Breve Notes* is published electronically three times a year: January, April, and August. Subscription is free with membership in SEMLA. Send submissions for *Breve Notes* to:

Alan Ringwood  
Music Library  
School of Music  
University of South Carolina  
813 Assembly Street  
Columbia, SC 29208  
Fax: 803-777-6508  
[Arringwo@gwm.sc.edu](mailto:Arringwo@gwm.sc.edu)

## FROM THE CHAIR

*Diane Steinhaus*

*University of North Carolina–Chapel Hill*

Greetings and Happy New Year to all SEMLA-ites (SEMLAnians?! I write as your new, “drier” Chair, attempting to follow in the “wet” and inspiring footsteps of the sometimes late and always great **Sarah Dorsey** (University of North Carolina–Greensboro). I think I’ll leave that metaphor alone for a while. Didn’t we have a great Fall meeting in Chapel Hill and Durham? **Lee Richardson** (University of North Florida) has ably written about it elsewhere in this issue, but I must add my comments and kudos as well. SEMLA seems incapable of putting on a poor show! A huge thank you goes to **Laurel Whisler** (Furman University), Chair of the Program Committee, and her colleagues **Brenda Gale Beasley** (Middle Tennessee State University), **Catherine Gick** (Vanderbilt University), and **Philip Vandermeer** (University of North Carolina–Chapel Hill) for presenting us with a stimulating variety of papers and panels on a wide variety of topics that made me proud of my profession and my colleagues. I never knew how interesting Metadata could be . . . (of course, the Krispy Kreme may have helped). Even though I chaired the Local Arrangements Committee, I feel justified in boasting about what a great job the Committee did because it was truly a team effort. From Duke we had the able assistance of **Kirstin Dougan**, **John Druessedow**, and **Lois Schultz**; and from UNC–Chapel Hill, **Catherine Pellegrino**, **Jill Shires**, and **Philip Vandermeer**. Co-hosting a meeting comes with its own special “challenges,” and this worthy group met and surpassed them all (including getting the Durham and Chapel Hill Visitors Bureaus to talk to one another!). And on top of that we’re all still friends! “Thank you” is definitely not enough to say to **Lynn Jacobson** (Jacksonville Public Library) for designing the conference Web site, and especially for so graciously accepting the constant flow of additions and changes to it leading up to the conference!



*Outgoing SEMLA Chair Sarah Dorsey (r) celebrates as incoming Chair Diane Steinhaus adjourns the business meeting.*

While I’m thanking people, I’d like to add a special thank you to **Music Library Service Company (MLSC)** and **Dana Jaunzemis**, proprietor, for footing the bill for our lovely opening reception. Dana not only runs a classy business, she is particularly devoted to the well being of SEMLA. If you don’t already do business with MLSC, I encourage you to begin!

Congratulations to our newly elected officers and thank you to **Brenda Gale Beasley** and **Guy Leach** (Georgia State University) for running—don’t think this is the last you’ve heard from us! Coming on to the Board as Member-at-Large is the “Digital King” **Lenny Bertrand** (Tulane University), and as Secretary/Treasurer, **David “Separate and Distinct” Hursh** (East Carolina University). Welcome to the Board! We also said good-bye to Member-at-Large **Rashidah Hakeem** (University of Mississippi) and Secretary/Treasurer **Steve Mantz** (Davidson College) at the Fall meeting. These faithful colleagues have labored long and hard over the last two years in many capacities, and I’m sure I don’t know even the half of it—many thanks! This was the third year of offering the SEMLA Travel Grant to a colleague just beginning his/her career in Music Librarianship, and the first year it has been funded 100% by SEMLA! **Richard Hodges**, an active musician and Library School student at Louisiana State University was this year’s recipient—congratulations and welcome, Richard!

Our unstoppable Web Task Force has been hard at work and at the Fall meeting unveiled our newly designed (and very classy) chapter Web site: <http://jpl.coj.net/sempla/index.html>. Thank you, **Lynn Jacobson** (chair), **Alicia Hansen** (Loyola University), and **Lee Richardson**! And as they are true SEMLA-ites, they asked for more work and are now in the process,

with the added assistance of **Steve Mantz**, of updating the 1984 edition of *Directory of Music Collections in the Southeast United States*.

Now that I’m in this seat I get to see even more clearly just how amazing SEMLA is, and I have the regular pleasure of telling you all about how wonderful y’all are. I am continually impressed with the dedication and competency (not to mention great humor) our members show toward each other, our organization, and the profession, and I can’t wait to see y’all in DC for MLA’s annual meeting in February! Our chapter meeting is scheduled for 7:00–9:00 PM on Friday, February 13. And then we’re on to Emory University in Atlanta for our 2004 annual chapter meeting—look for the conference preview in the August issue!

## Member News

**Lynne Jaffe**, sole proprietor of At Your Service: Library Contract Cataloging, has moved: 143 Woodland Hills Blvd., Madison, MS 39110-7823; Phone: (601) 853-7432; E-mail: [at\\_your\\_service@bellsouth.net](mailto:at_your_service@bellsouth.net).

## 4 Breve Notes

### Conference Summary

Continued from page 1

research project will be published in *Music Reference Services Quarterly*, volume 8, issue 3/4.

The last presentation of the day was “Music in Non-Music Libraries: Southeastern Baptist Theological Seminary” by Joan McGorman from Southeastern Baptist Theological Seminary. She talked about the music collections in the library, the courses offered at the Seminary and how this impacted the music that was collected.

At the end of the day, the group was offered an optional tour of the newly renovated R. B. House Undergraduate Library at UNC-Chapel Hill before a delicious banquet at the Top of the Hill Restaurant in Chapel Hill.

For the last day of the annual meeting, the group moved to the Thomas Room in the Lilly Library at Duke University. Dr. Thomas Wall, Director of Public Services at Duke, welcomed the group, talked about Duke’s libraries, and gave a brief history of the University.

The presentations for the last day dealt with “Refreshers/New Directions” in several different areas. Gary Boye from Appalachian State University was first with his presentation, “Online Pathfinders for World Music: New Directions in Collection Development and Bibliographic Instruction.” He described the processes used in his library to create a good collection in world music. He also showed maps he created which are useful as collection development tools and for bibliographic instruction. The world music guides with maps can be found at: <http://www.library.appstate.edu/music/research.html#world>.

Next was a presentation on Journal Finder by Beth Bernhardt at the University of North Carolina–Greensboro. Journal Finder is an integrated search interface that allows users searching for serial publications to determine if the library has electronic access to, or a print copy of, a serial. It also indicates which other libraries own print copies. Copies of articles can be ordered and sent directly to the user. More information about the Journal Finder is available at: <http://journalfinder.uncg.edu/uncg/>.



Enjoying food and camaraderie at the Hilltop Restaurant.

“Conventional Terminology in the Description of Sound Recordings,” by Alan Ringwood from the University of South Carolina, was the last presentation. The MLA Subcommittee on Descriptive



Local Arrangements co-chairs Diane Steinhaus and John Druessedow.

Cataloging has proposed changes dealing with the addition of conventional terminology to chapter 6 of AACR2. Alan outlined these proposed changes and informed the group how these changes, if implemented, would affect music cataloging.

The group then walked over to the Biddle Music Building for a tour of the musical instrument collection.

Sarah Dorsey (UNC-Greensboro) started off the business meeting by reading “Two Kinds of Intelligence” by thirteenth-century poet, Rumi. Joyce Clinkscales from Emory University told the group a little about what could be expected at the annual meeting next year in Atlanta. Look for more information and dates for the annual meeting to be announced on SEMLA-L. A big SEMLA welcome was given to first time attendees Kirstin Dougan (Duke University), Matt Nelson (UNC-Greensboro), David Guion (UNC-Greensboro), Betsy Dain (National Humanities Center), Catherine Pellegrino (UNC-Chapel Hill), Tracy Waterman (UNC-Chapel Hill), and Mary Rose Atkins (Winthrop University). SEMLA also welcomed first time attendee Richard Hodges (Louisiana State University) who received this year’s SEMLA travel grant to attend the meeting. Election results were announced with congratulations going to David Hursh (East Carolina University), our new Secretary/Treasurer and Lenny Bertrand (Tulane University), our new Member-at-Large.

Several topics were discussed during the business meeting, including the 2006 national meeting in Memphis, which SEMLA will be hosting. Money is an important issue and we have some money in the bank, but we will need to think of ways to raise more. We also discussed what sort of gatherings and activities SEMLA may plan for the national meeting, which is especially important since that will be MLA’s 75<sup>th</sup> anniversary. A task force will be in charge of updating *A Directory of Music Collections in the Southeast United States*. Other topics included library school liaisons and updating the SEMLA Chapter Officer Handbook. The group also discussed how election ballots are submitted. We discussed traditional mail and e-mail, and whether wording would have to be changed in the bylaws to include e-mail. Laurel Whisler (Furman University), Program Committee Chair, Diane Steinhaus (UNC-Chapel Hill), Local Arrangements Chair, John Druessedow (Duke University), and many others who helped make a fantastic meeting were heartily thanked by the entire group.

See Conference Summary, page 5



## East Carolina University Music Library Receives CD Collection

David Hursh, Music Librarian, East Carolina University

Due to the generosity of a daughter and grandson, former East Carolina University Professor David Serrins will continue to share his love of music with music students for years to come. In September 2003, ECU alumni and Greenville residents, Joan and Scott Respass, donated the compact disc collection of their father and grandfather to the Music Library. This academician's collection of approximately 800 titles is notable for its multiple interpretations of major orchestral works by various conductors and ensembles, as well as its concentrations in the music of Mahler and Mozart, two of Mr. Serrins' favorite composers.

Mr. Serrins, a native of Oil City, Pennsylvania, received his Bachelor of Music degree from the University of Florida—Coral Gables, and his Master of Music degree from UNC—Chapel Hill. Before coming to ECU in 1962, Mr. Serrins taught music in the Charlotte area public school system and served as principal oboist of the Charlotte Symphony. He was also one of the founders of the Charlotte Symphony Youth Orchestra. He is credited with establishing a quality orchestral program at ECU during his five-year tenure. In

a March 3, 1967 letter to Serrins, East Carolina College president Leo Jenkins congratulated him heartily for a superb concert and told him how pleased he was to have him at ECC. Later that year, Serrins heeded the call to return to his alma mater, UNC—Chapel Hill, where he served as oboe professor and symphony conductor until his retirement in 1985.

Mr. Serrins died on November 10, 2002 at the age of 82. According to all accounts, Mr. Serrins' teaching and music-making were characterized by a rare passion and the ability to communicate that passion to his students and listeners. According to ECU music professor emeritus Paul Topper, Serrins "was a musician to the bone." Joan and Scott Respass gave the collection to ECU because they are alumni of the school and they wanted their father's legacy to continue where his university teaching career began. The Music Library staff is most grateful for the gift because it has in a short period of time added a quantity and quality of listening materials to the Music Library's collection that would otherwise have taken years to assemble.

### Conference summary

*Continued from page 4*

As part of her final duties as SEMLA Chairperson, Sarah Dorsey gave fun gifts to outgoing and incoming officers. Stephen Mantz (Davidson College), outgoing Secretary/Treasurer, received a paddle ball; Rashidah Hakeem (University of Mississippi), outgoing Member-at-Large, received bubbles; and incoming Chairperson Diane Steinhaus received a toy cell phone, in case she needs to call Sarah every once in a while. More gifts were distributed as Neil Hughes (University of Georgia) thanked Sarah for her hard work and presented her with a Wonder Woman address book. Lois Kuyper-Rushing (Louisiana State University) also thanked Sarah by reading an original poem. Finally, Lois and Diane gave Sarah a pair of earrings that were, of course, mismatched.

A delicious close to a delicious meeting was generously provided by Duke University in the form of lunch from Bullock's BBQ.



*Welcoming first time attendees at the business meeting.*

*For more 2003 Conference photos, point your Web browser to*

<http://www.tulane.edu/~musiclib/semla/semla-2003>

*Thanks to shutterbugs Darlene Bertrand, Lenny Bertrand, and Laurel Whisler.*

## 6 Breve Notes

**MINUTES**  
**Business Meeting**  
**Southeast Chapter, Music Library Association**  
**Oct. 25, 2003, Durham, NC**  
**Sarah Dorsey, Chair, presiding**  
(43 people present)

### 1. Call to order

The meeting was called to order and opened with a reading by the chair from *The Essential Rumi*, "Two Kinds of Intelligence."

**2. Last Chance to Vote:** Any member in good standing who has not yet voted in the election can still vote by submitting a ballot to Rashidah Hakeem immediately.

### 3. Minutes

The minutes of the meeting in Austin, Texas (Feb. 14, 2003) were approved as written.

### 4. Treasurer's Report

For period: Feb. 10, 2003-October 22, 2003                      Submitted by Stephen Mantz                      Date: October 22, 2003

Balance as of February 10, 2003:	\$ 2,199.35
<b>INCOME</b>	
Contributions to SEMLA	\$ 315.00
Interest on checking account	1.36
Meeting Registrations	2,310.00
Membership Dues	449.00
<u>MLA Grant</u>	<u>200.00</u>
<b>TOTAL</b>	<b>\$3,275.36</b>
EXPENSES (No expenses incurred)	\$ 0.00
<b>BALANCE</b>	<b>\$5,474.71</b>
Certificate of Deposit	
13 mo. CD (matures 12/18/03)	\$ 4,301.48
Interest on CD to date	64.33
<u>Current value of CD</u>	<u>4,365.81</u>
<b>NET WORTH as of October 22, 2003</b>	<b>\$9,840.52</b>

---

Membership:    Individual: 85 ; Institutional: 5

### 5. Welcome to new members and first time attendees

Those members new to SEMLA or attending their first annual meeting were recognized and welcomed, including Mac Nelson, Kirstin Dougan, David Guion, Betsy Dain, Richard Hodges, Catherine Pellegrino, Mary Rose Adkins, and Tracy Waterman.

**6. SEMLA Travel Grant** recipient Richard Hodges was acknowledged and welcomed.

### 7. Web Task Force

The new SEMLA Web page has been unveiled here at the meeting to many rave reviews. It will be available to the public in about a week. It appears that one of the fonts used on the page does not appear on everyone's computers. It may be that we will take a survey on SEMLA-L about this "funky font," to see how many can see it! The SEMLA pages may be down a few days while Jacksonville Public migrates to a new library system. The Task Force was acknowledged for their hard work: Lynn Jacobson (chair), Alicia Hansen, Lee Richardson.

The need to update the *Directory of Music Collections in the Southeast United States* was discussed. It was agreed that the Web Task Force would continue with this project. Steve Mantz volunteered to also serve on the group.

**8. MLA Chapter Grant:** This grant has been received, and some people have volunteered to be liaisons with library schools, but not enough to pair a person with each institution. Kirstin Dougan, Diane Steinhaus, and David Hursh volunteered to serve on a task force, working on the specifics of this liaison program.

**9. The Chapter Officer Handbook** update will be completed by next year at this time. Individuals who have served as officers will be contacted for their input into changes needed for the handbook.

**10. 2004 SEMLA Annual Meeting: Emory University, Atlanta**

Joyce Clinkscales reported on next year's meeting. Details will be coming later. There was a suggestion that we make sure that the meeting does not conflict with the OLAC or other national meetings scheduled for Fall 2004.

**11. Memphis 2005**

This will be a preview of the National Meeting to be held in Memphis in 2006. We will need close to \$10,000 for local arrangements. It was noted that for the Washington D.C. (Feb. 2004 MLA) meeting, local arrangements is hosting a concert: we do not need to be locked into the usual "Local Arrangements Reception." Perhaps we can do something with the National 75<sup>th</sup> Anniversary Committee.

Discussion of how to raise money for the 2006. Perhaps members could ask their institutions to make a contribution. Local Memphis businesses may also be willing to contribute (we need to be aware of MLA's fund-raising efforts with these businesses, too).

Two task forces will be formed to plan for the 2006 Memphis meeting: one for planning, and one for fund-raising. The two will need to coordinate with each other. An announcement will be made on SEMLA-L asking for people willing to serve on these task forces.

**12. Election Results**

Thanks to the Nominating Committee (Rashidah Hakeem, Chair; Lee Richardson, Margaret Miller) for their hard work, and to everyone who ran. Congratulations to the winners: David Hursh, Secretary/Treasurer; Lenny Bertrand, Member-at-Large.

A discussion of whether we needed to change the bylaws to allow electronic voting resulted in the decision that we would indeed need to make a change, to avoid any future ambiguity about whether the term "mail" was intended to include "electronic mail." The ballot for voting on changes to the bylaws are usually mailed out with the July dues mailing.

**13. Old Business and Thanks**

Thank you to the Local Arrangements and Program Committees for a fine meeting:

Local Arrangements: Diane Steinhaus (Chair), John Druesedow, Kirstin Dougan, Catherine Pellegrino, Lois Schultz, Jill Shires, and Philip Vandermeer.

Program: Laurel Whisler (Chair), Brenda Gale Beasley, Catherine Gick, and Philip Vandermeer.

Special Thanks to: Music Library Service Company; the staffs of the Duke Music Library, the Lilly Library (Duke University), and the UNC-Chapel Hill Music Library; the Perkins Library Administration, Duke University; Academic Affairs Library Administration, UNC-Chapel Hill; Dr. David Arcus; Dr. Joe Hewitt; Dr. Brenda Neece; and Dr. Thomas Wall.

Outgoing Board members Rashidah Hakeem and Stephen Mantz were thanked, and Diane Steinhaus was welcomed as the new Chair.

Special presentations of thanks to outgoing Chair Sarah Dorsey were made by Neil Hughes and Lois Kuyper-Rushing.

**14. New Business:** no other new business was reported.

**15. The meeting was adjourned,** with the yellow hammer of despotism being passed to the new Chair.

Respectfully submitted,

Stephen Mantz  
Secretary/Treasurer-

**SEMLA**  
**Southeast Chapter of the Music Library Association**  
**Membership Application Form**

Name:  
E-Mail Address:  
Institutional Affiliation

Preferred Mailing Address  
Street Address:  
City, State, Zip:

Work Phone:  
Fax:

Are you currently a member of the national Music Library Association?    Yes    No

Membership categories:  
Personal            \$5.00  
Student             \$2.00  
Institutional       \$5.00

Please make your check payable to SEMLA and mail it along with this form to:

David Hursh  
Music Library  
Fletcher Music Center  
East Carolina University  
Greenville, NC 27858-4353

---